

Border check without queueing – Come and test your Digital Travel Credentials DTC on UK flights



1.
Download the FIN DTC Pilot application for digital travel document.



2.
Register with the police. Take your valid passport with you.

- Vantaa Main Police Station's licence services (Tikkurila)
- Servicepoint in Helsinki Airport, licence service

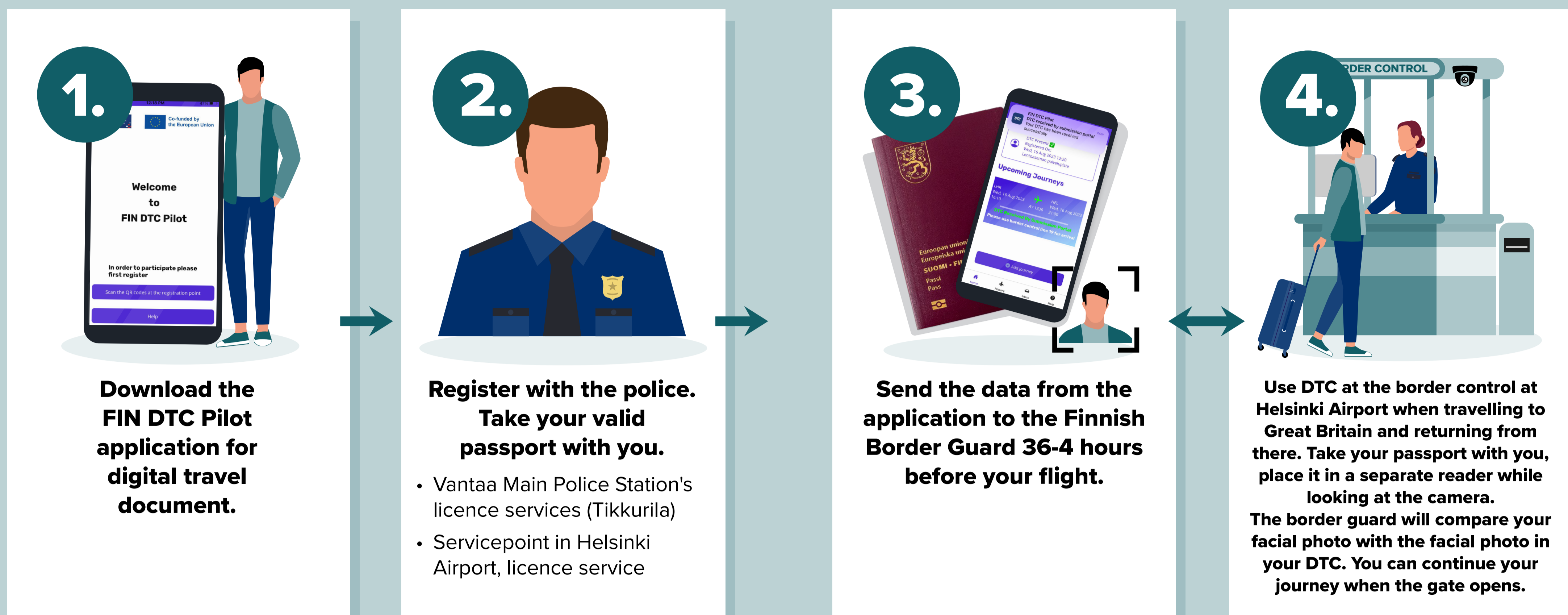


3.
Send the data from the application to the Finnish Border Guard 36-4 hours before your flight.

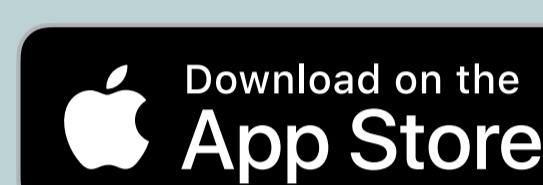


4.
Use DTC at the border control at Helsinki Airport when travelling to Great Britain and returning from there. Take your passport with you, place it in a separate reader while looking at the camera. The border guard will compare your facial photo with the facial photo in your DTC. You can continue your journey when the gate opens.

Border check without queueing – Come and test your Digital Travel Credentials DTC on UK flights



1. Download the **FIN DTC Pilot** application.



2. Register with the police. Take your valid passport with you.

- Vantaa Main Police Station's licence services (Tikkurila), Ratatie 11 C, 6th floor, 01300 VANTAA
- Eastern Uusimaa servicepoint in Helsinki Airport, licence service, Lentäjäntie 1 B, 4th floor, 01530 VANTAA
- Book an appointment for registration: Appointment | Police e-services

You must be a Finnish citizen.

For registration, take your valid passport with you. The passport will be used to identify you and its chip is read to create a digital travel document. During registration, a facial photo will be taken and you will be asked to sign a consent form. If you wish to withdraw your consent, you can do so at the registration points or by sending an e-mail to DTChelpline@raja.fi. The message must contain the passport number with which DTC registration was completed. You will only need to register with the police once. After registration, you can use your DTC at Helsinki Airport each time you travel to the United Kingdom and return to Helsinki Airport on direct Finnair flights.

3. Send the data from the application to the Finnish Border Guard **36-4 hours before your flight** each time you fly from Helsinki Airport on a Finnair flight to London, Manchester or Edinburgh and when you return to Helsinki Airport on Finnair flight. DTC can only be used for border control at Helsinki Airport. During the border control in the UK, follow the instructions of the local authorities. Take your passport with you.

4. Use the **DTC at the border control at Helsinki Airport** when you leave for and return from Great Britain. The border guard will compare your facial photo with the DTC facial photo. Place your passport on a separate reader while looking at the camera. At Helsinki Airport, as a volunteer testing DTC, use border control line **21** when you leave Finland and line **19** when you arrive in Finland.

